

1 FIRST FLOOR PLAN  
SCALE: 1/8" = 1'-0"



# Athletic Fields – Middle / High School

School	HS Fields	MS Field	Combined Fields
<b>Phoenixville Current</b>	-	-	5
Owen J. Roberts	-	-	8
Pottstown	-	-	8
Twin Valley	-	-	10
<b>Phoenixville Proposed</b>	-	-	11
West Chester 1	-	-	11
West Chester 2	-	-	11
West Chester 3	-	-	12
Methacton	8	5	13
Downingtown 1	-	-	13
Downingtown 2	-	-	14
Great Valley	-	-	14
Unionville	-	-	15
Coatesville	10	6	16
Spring-Ford	-	-	16
Conestoga	6	13	19
Boyertown	10	12	22





VIEW C – proposed



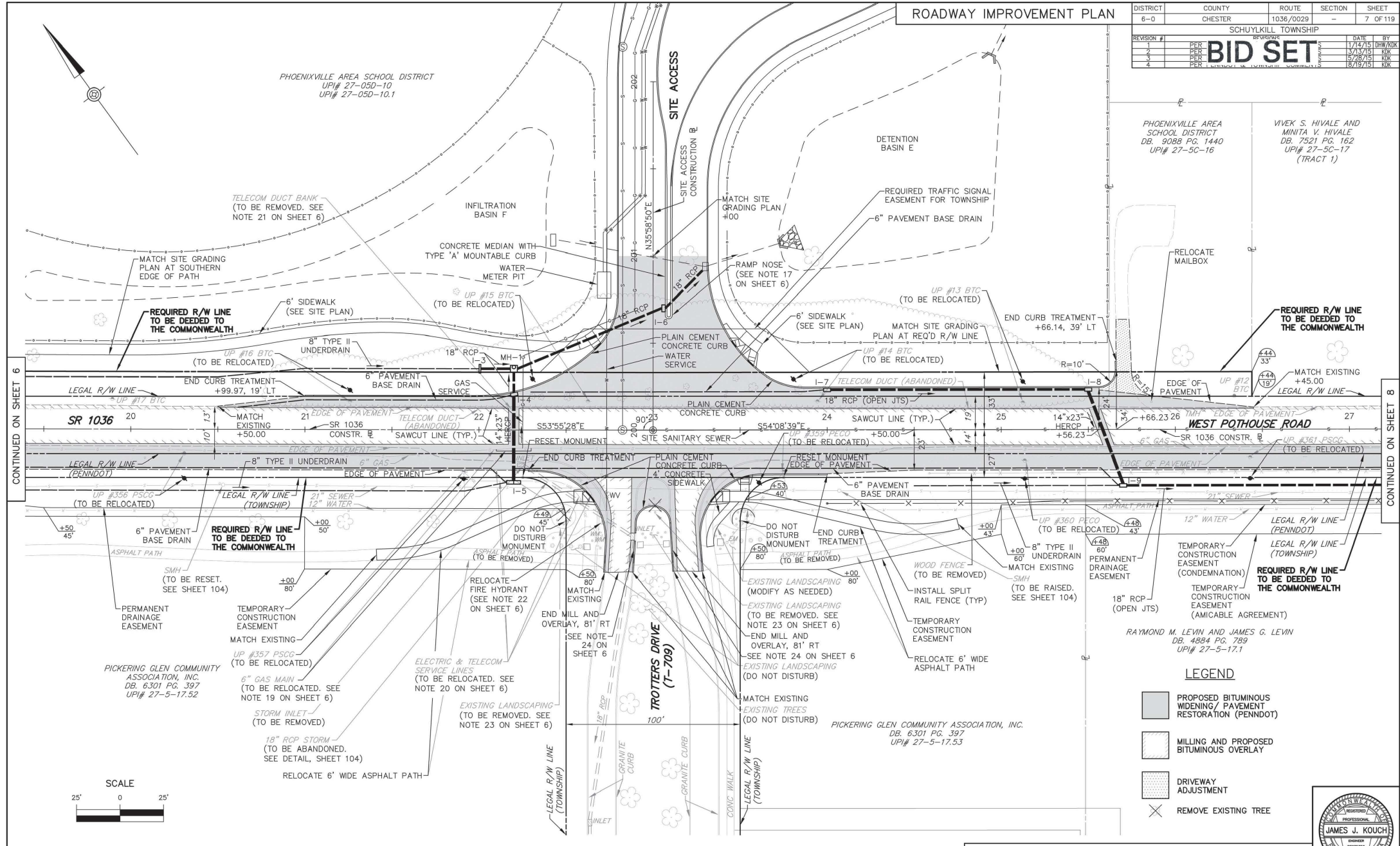
ROADWAY IMPROVEMENT PLAN

DISTRICT	COUNTY	ROUTE	SECTION	SHEET
6-0	CHESTER	1036/0029	-	7 OF 119
SCHUYLKILL TOWNSHIP				
REVISION #	PER	DATE	BY	
1	PER	1/14/15	DW/TKK	
2	PER	3/13/15	RJK	
3	PER	5/28/15	RJK	
4	PER	8/19/15	RJK	

**BID SET**

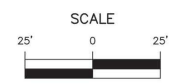
PHOENIXVILLE AREA SCHOOL DISTRICT  
DB. 9088 PG. 1440  
UPI# 27-5C-16

VIVEK S. HIVALE AND MINITA V. HIVALE  
DB. 7521 PG. 162  
UPI# 27-5C-17  
(TRACT 1)



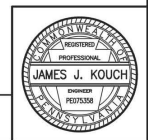
CONTINUED ON SHEET 6

CONTINUED ON SHEET 8



**LEGEND**

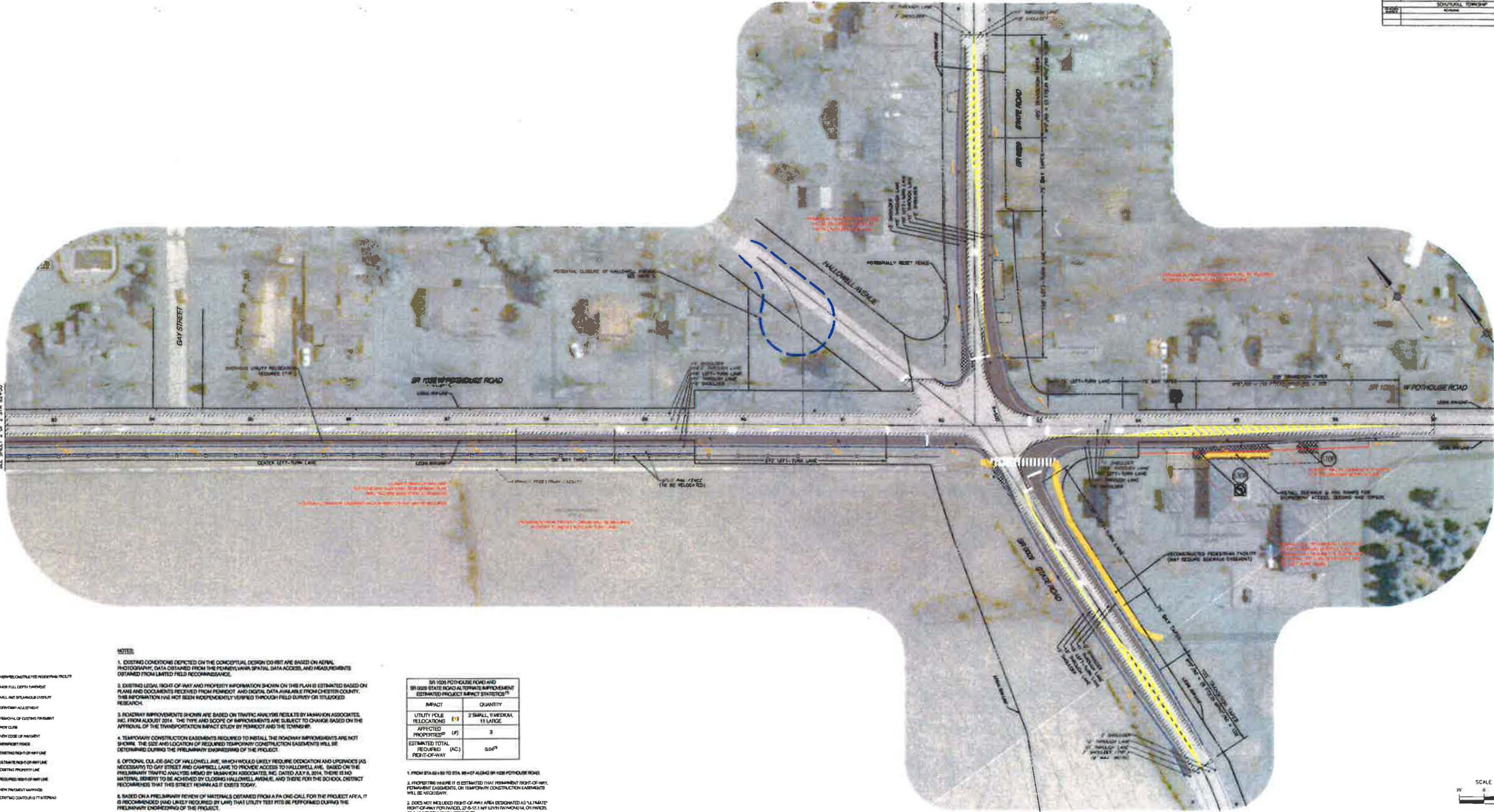
- PROPOSED BITUMINOUS WIDENING/ PAVEMENT RESTORATION (PENNDOT)
- MILLING AND PROPOSED BITUMINOUS OVERLAY
- DRIVEWAY ADJUSTMENT
- X REMOVE EXISTING TREE



FOR PROFILE, SEE SHEET 28 & 34



DISTRICT	00000	ROUTE	1036	SHEET	2 OF 2	
DISTRICT	00000	ROUTE	1036	SHEET	2 OF 2	
PROJECT	ROADWAY IMPROVEMENTS ALONG SR 0029 STATE ROAD AND SR 1036 POTHOUSE ROAD				DATE	08/26/14
SCALE					DATE	08/26/14



- LEGEND**
- NON-CONSTRUCTED PEDESTRIAN FACILITY
  - NEW FULL DEPTH PAVEMENT
  - MILL AND OVERLAY
  - DRIVEWAY RELOCATION
  - REMOVAL OF EXISTING PAVEMENT
  - NEW CURB
  - NEW CURB OF PAVEMENT
  - SIDEWALK
  - UTILITY RELOCATION
  - ULTIMATE RIGHT-OF-WAY LINE
  - EXISTING RIGHT-OF-WAY LINE
  - REQUIRED RIGHT-OF-WAY LINE
  - NEW PAVEMENT
  - EXISTING CONTOUR

**NOTES**

- EXISTING CONDITIONS DEPICTED ON THE CONCEPTUAL DESIGN DO NOT ARE BASED ON AERIAL PHOTOGRAPHY, DATA OBTAINED FROM THE PENNSYLVANIA SPATIAL DATA ACCESS, AND MEASUREMENTS OBTAINED FROM LIMITED FIELD RECOGNIZANCE.
- EXISTING LEGAL RIGHT-OF-WAY AND PROPERTY INFORMATION SHOWN ON THIS PLAN IS ESTIMATED BASED ON PLANS AND DOCUMENTS RECEIVED FROM PENNSDOT AND DIGITAL DATA AVAILABLE FROM CHESTER COUNTY. THIS INFORMATION HAS NOT BEEN INDEPENDENTLY VERIFIED THROUGH FIELD SURVEY OR TITLED/LOKED RESEARCH.
- ROADWAY IMPROVEMENTS SHOWN ARE BASED ON TRAFFIC ANALYSE RESULTS BY HANNAH ASSOCIATES, INC. FROM AUGUST 2014. THE TYPE AND SCOPE OF IMPROVEMENTS ARE SUBJECT TO CHANGE BASED ON THE APPROVAL OF THE TRANSPORTATION IMPACT STUDY BY PENNSDOT AND THE TOWNSHIP.
- TEMPORARY CONSTRUCTION EASEMENTS REQUIRED TO INSTALL THE ROADWAY IMPROVEMENTS ARE NOT SHOWN. THE SIZE AND LOCATION OF REQUIRED TEMPORARY CONSTRUCTION EASEMENTS WILL BE DETERMINED DURING THE PRELIMINARY ENGINEERING OF THE PROJECT.
- OPTIONAL CLOSURE OF HALLOWELL AVENUE, WHICH WOULD LIKELY REQUIRE DEDICATION AND UPWARDS (AS NECESSARY) TO GAY STREET AND CAMPBELL LANE TO PROVIDE ACCESS TO HALLOWELL AVE. BASED ON THE PRELIMINARY TRAFFIC ANALYSE BY HANNAH ASSOCIATES, INC. DATED JULY 8, 2014, THERE IS NO MATERIAL EVIDENCE TO BE ACHIEVED BY CLOSING HALLOWELL AVENUE, AND THEREFORE THE SCHOOL DISTRICT RECOMMENDED THAT THIS STREET REMAIN AS IT EXISTS TODAY.
- BASED ON A PRELIMINARY REVIEW OF MATERIALS OBTAINED FROM A PHONE CALL FOR THE PROJECT AREA IT IS RECOMMENDED (AND LIKELY REQUIRED BY LAW) THAT UTILITY TESTS BE PERFORMED DURING THE PRELIMINARY ENGINEERING OF THE PROJECT.

SR 1036 POTHOUSE ROAD AND SR 0029 STATE ROAD LOCAL TRAFFIC IMPROVEMENT ESTIMATED PROJECT IMPACT STATISTICS	
IMPACT	QUANTITY
UTILITY POLE RELOCATIONS (F)	2 SMALL, 11 LARGE
AFFECTED PROPERTIES (P)	3
ESTIMATED TOTAL REQUIRED (AC)	0.06 <sup>2</sup>
RIGHT-OF-WAY	

- FROM STA 8+80 TO STA 88+07 ALONG SR 1036 POTHOUSE ROAD.
- PROPERTY WHERE IT IS ESTIMATED THAT TEMPORARY CONSTRUCTION EASEMENTS WILL BE NECESSARY.
- DOES NOT INCLUDE RIGHT-OF-WAY AREAS DESIGNATED AS 'ULTIMATE' RIGHT-OF-WAY FOR PARCELS 27-6-1711 HWY LEVIN RAMP ROAD OR PARCEL 27-6-48 HWY SOUTHVIEW TOWNSHIP.



**McMAHON**

1155 COMMERCIAL DR  
SUITE 200  
21 WASHINGTON PI, PHOENIX PA 19384  
TEL: (610)-303-5444  
FAX: (610)-392-1447

THE SPRINGDALE DR  
EXTON, PA 19341  
TEL: (610)-394-9930  
FAX: (610)-394-6550

23003 WASHINGTON DRIVE  
SUITE 301  
CAMDEN, PA 17011  
TEL: (717)-472-0289  
FAX: (717)-472-0283

PHOENIX PA 19384  
EXT: 60181  
DATE: 8/26/14

CONCEPTUAL DESIGN EXHIBIT  
NOT FOR CONSTRUCTION

PHOENIXVILLE AREA SCHOOL DISTRICT  
230 GAY STREET  
PHOENIXVILLE, PA 19383  
(610) 391-3000

ROADWAY IMPROVEMENTS ALONG  
SR 0029 STATE ROAD AND SR 1036 POTHOUSE ROAD  
SCHUYLKUP TOWNSHIP  
CHESTER COUNTY